

Where Access Control Meets Intelligence

▲ ROC Access

Biometrics, video analytics, and intelligent access — working as one. Powered by the Face1 multimodal reader.



Move beyond credentials to real-time intelligence.

ROC Access Face1 is a transparent-mode biometric reader designed for both high-throughput and high-security applications. Built for more than credentials, it transforms the access point from a passive checkpoint into a proactive intelligence layer.

Top-Ranked Multimodal Algorithms

Powered by ROC's proven Vision AI stack, combining NIST-benchmarked face recognition with broader multimodal analytics for fast, accurate identity decisions.

- #1 global face recognition provider in combined accuracy & efficiency*
- #1 global age estimation provider for child safety**
- Multimodal video analytics including watchlisting and gun detection
- Advanced face analytics including passive liveness

More than Traditional Biometric Access Control

Not limited by traditional on-board processing constraints, Face1 architecture enables secure-side processing and matching for more flexible workflows, enhanced features, and a faster path to future capability upgrades.

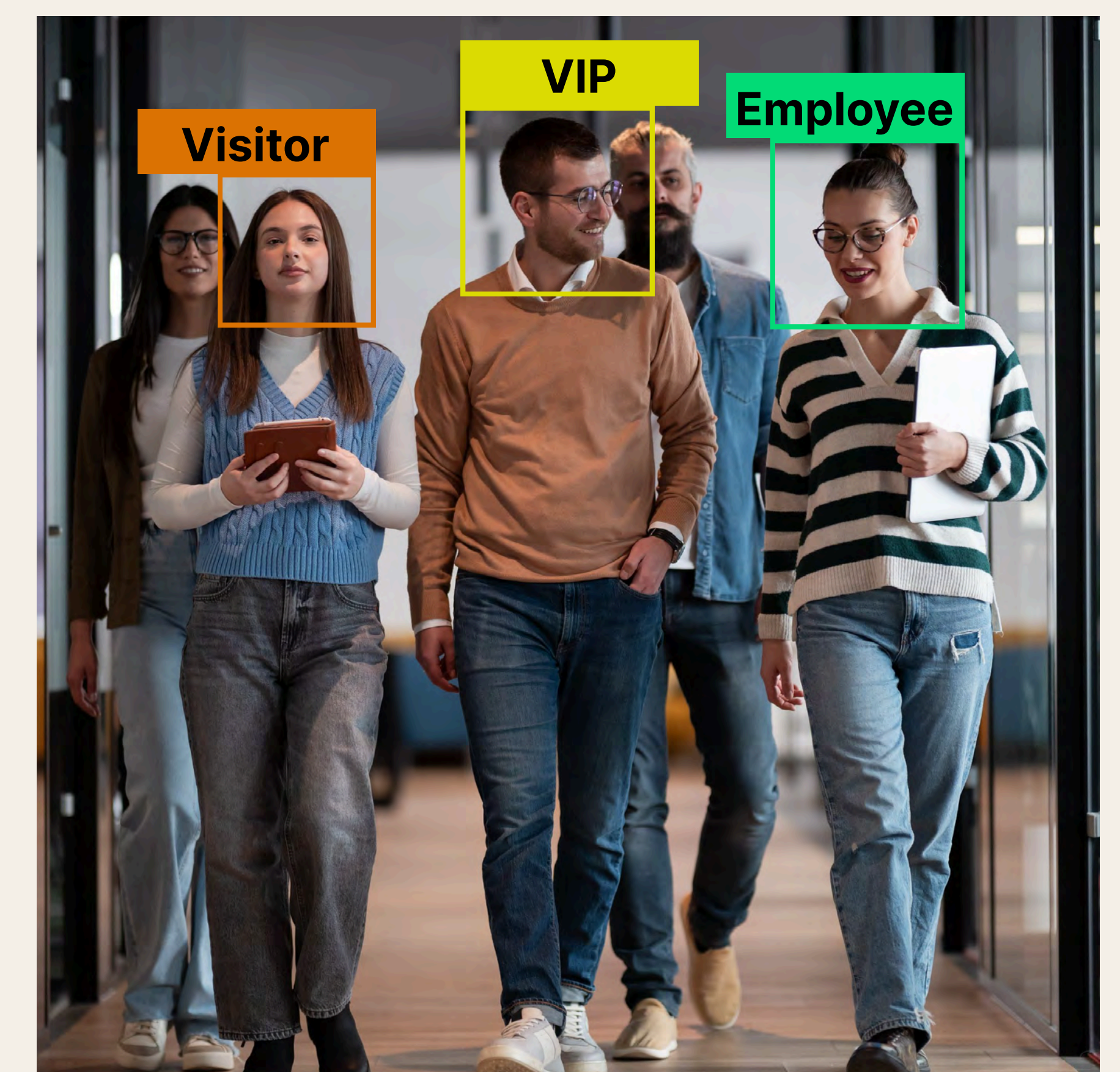
- Flexible software deployment architecture (on-prem, cloud, or hybrid)
- Better positioned to benefit from advancements in GPU compute
- Not locked in to fixed, non-upgradable sensor, CPU & NPU components
- Scales from single door to enterprise-wide deployment

Security and Privacy by Design

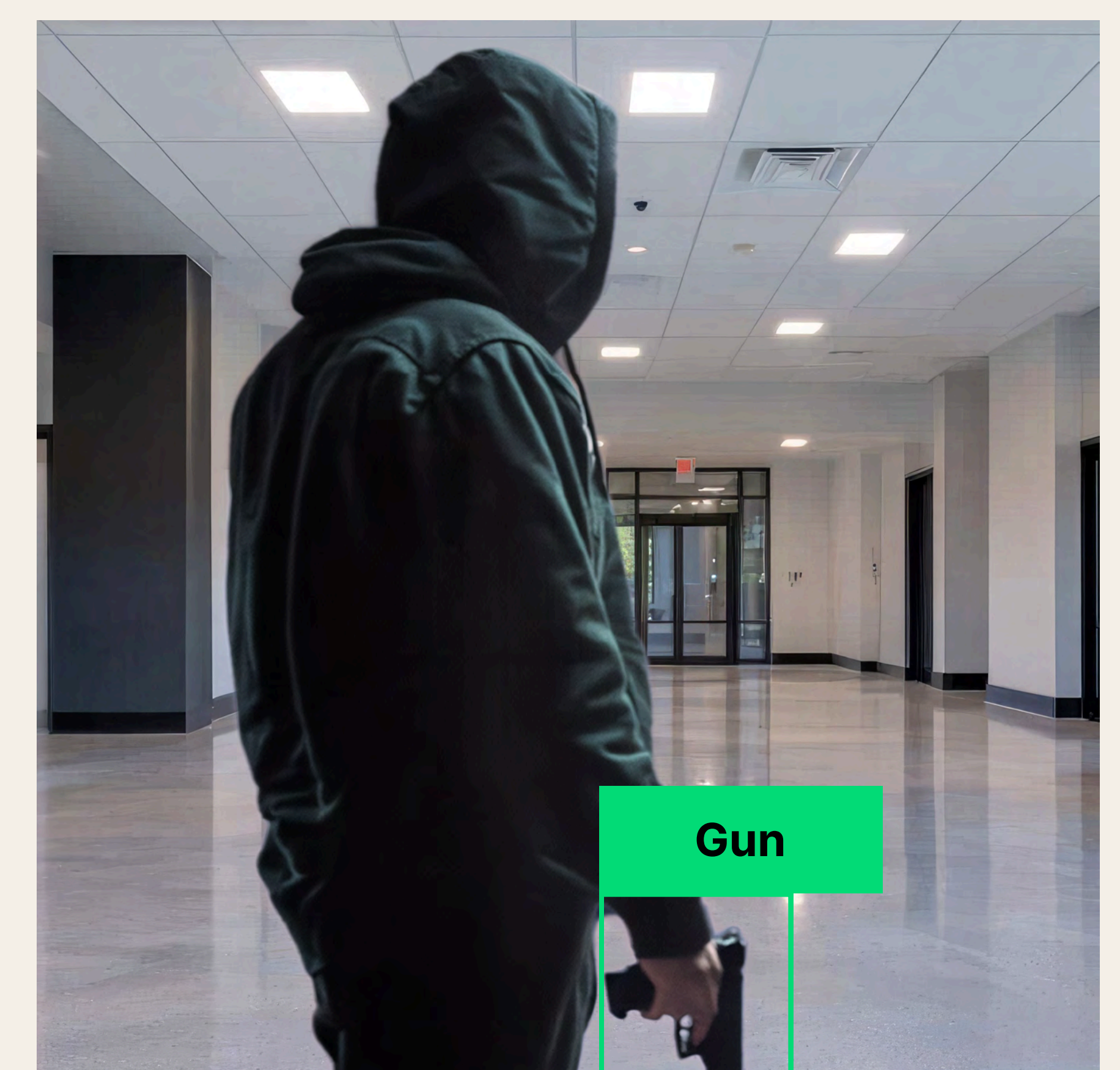
Built for organizations that need strong security, operational accountability, and flexible privacy controls from day one.

- Extensive system and operational audit tools
- Fully configurable retention policies
- Configurable redaction mode
- GDPR-compliant touchless user trigger mode
- Designed to support secure, privacy-aware biometric workflows

*NIST FRTE **NIST FATE (AEV)



Simultaneous Facial Recognition



Gun Detection



Parallel Intelligence Features

- Watchlist and threat detection, including lockdown requests
- Weapon detection for hand guns and long guns
- Person search by face and/or attributes, including last seen and seen with
- Loitering alerts
- Age estimation alerts

Flexible Access Control Workflows

ROC Access supports a wide range of intelligent access control workflows by tracking and identifying multiple faces in parallel. This allows organizations to move beyond simple credential checks and apply more adaptive access logic at the point of entry.

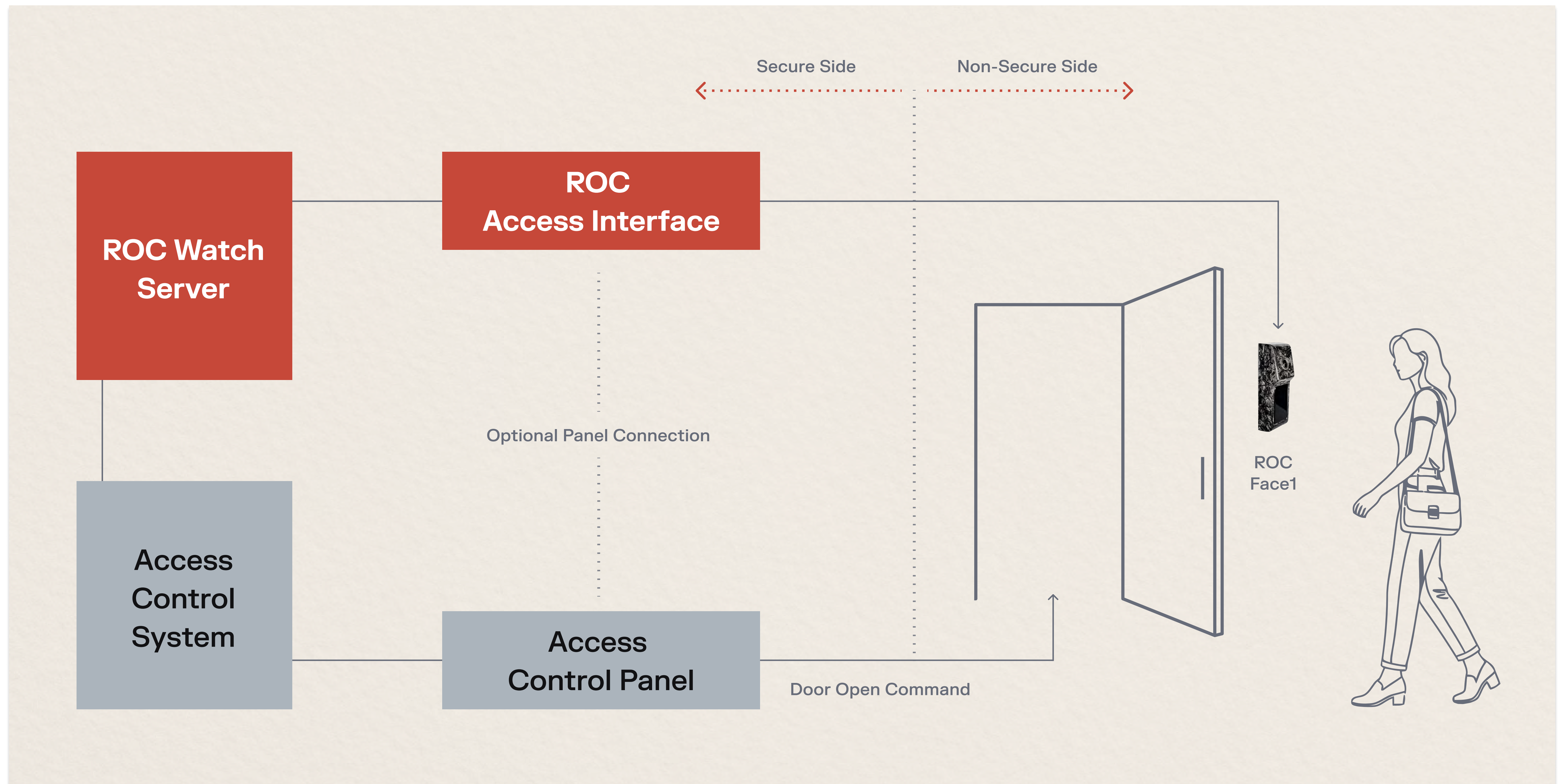
- Enforced single-person access
- Accompanied visitor rule
- Two-person rule
- Tailgate detection
- Visitor management

Increased Lifespan. Lower Servicing Costs.

- Field-replaceable & upgradable independent imaging & display modules
- Reduces downtime and servicing cost
- Secure side interface module with multi reader support & redundancy

American-Made. Built Tough.

- Designed and manufactured in the USA and available in both forged carbon fiber and polycarbonate construction
- Industry-first forged carbon fiber housing for demanding applications seeking premium materials and extreme durability



Secure-Side Biometric Processing

Most biometric readers process images and generate biometric templates on the non-secure side of a door or barrier, increasing the attack surface. Face1 implements a fully transparent biometric model in which image processing, template generation, and matching occur only on the secure side. This applies to both identification (1:N) and authentication (1:1) matching modes.

ROC Access Face1 Specifications

- Ultra compact 137mm (h) x 51mm (w) x 38mm (d)
- 1:1 & 1:N (default 50k user face identification)
- Dynamic TOTP QR code for multi-factor authentication or visitor access
- Full HD imaging with proprietary digital interface
- Secure element (CC EAL 6+), system-on-chip security (TEE)
- 2" capacitive touchscreen
- Unidirectional display interface

Secure Side Interface & Optional Connections

- PoE+ (Type 2) (IEEE 802.3at) & 12v compatible
- TCP/IP ethernet 100Mbps connected to any MQTT broker
- Access locks (separate power option)
 - 5A @ 30 VDC relay contacts
 - Resistive normally closed contact (NC): 3A @ 30 VDC jumper configurable for both magnetic or strike locks
- Wiegand ports, IN and OUT: IN - Data-1/Data-0
 - LED-Green and LED-Red c/c outputs OUT - Data-1/Data-0
 - LED-Green and LED-Red TTL inputs 2x One-wire bi-color LED connectors
- Door OPEN-CLOSE sensor connectors.
- RTE push button input connectors with custom record options
- Tamper and power monitor